

# B&C #E150 - TU 01T



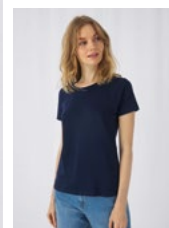
Want the same style/shape but in a heavier fabric?  
TRY THE B&C #E190  
Want the same style/shape but in long sleeve?  
TRY THE B&C #E150 LSL

## REGULAR FIT

The modern tubular short-sleeve T-shirt with contemporary look and the unchanged 150g fabric quality by B&C for 20 years.

Your #150bestchoice #basicttee

DU♂ WHITE*	DU♂ BLACK*	DU♂ NAVY BLUE*	DU♂ SPORT GREY*	DU♂ ROYAL BLUE*	DU♂ RED*
DU♂ NATURAL	DU♂ SAND	DU♂ MILLENNIAL PINK	DU♂ SOLAR YELLOW	DU♂ GOLD	DU♂ APRICOT
DU♂ ORANGE	DU♂ FIRE RED	DU♂ DEEP RED	DU♂ FUCHSIA	DU♂ BURGUNDY	DU♂ TURQUOISE
DU♂ ATOLL	DU♂ REAL TURQUOISE	DU♂ DIVA BLUE	DU♂ SKY BLUE	DU♂ AZURE	DU♂ DENIM
DU♂ LIGHT NAVY	DU♂ NAVY	DU♂ COBALT BLUE	DU♂ ELECTRIC BLUE	DU♂ RADIANT PURPLE	DU♂ URBAN PURPLE
DU♂ PISTACHIO	DU♂ ORCHID GREEN	DU♂ KELLY GREEN	DU♂ BOTTLE GREEN	DU♂ URBAN KHAKI	DU♂ MILLENNIAL KHAKI
DU♂ ASH	DU♂ DARK GREY	DU♂ USED BLACK	DU♂ BLACK PURE	DU♂ BEAR BROWN	*COLOURS AVAILABLE IN 4XL AND 5XL



## DU♂ CONCEPT

with B&C #E150 /women  
EXISTS IN B&C EXACT 150 /KIDS

- 100% pre-shrunk ring-spun cotton  
SPORT GREY: 85% PRE-SHRUNK RING-SPUN COTTON - 15% VISCOSE  
ASH: 99% PRE-SHRUNK RING-SPUN COTTON - 1% VISCOSE
- Single Jersey
- 145 g/m<sup>2</sup>
- XS - S - M - L - XL - 2XL - 3XL - 4XL\* - 5XL\*
- 10 pcs/pack & 100 pcs/carton

\* ONLY AVAILABLE IN WHITE, BLACK, NAVY BLUE, SPORT GREY, ROYAL BLUE AND RED

### #Style /Fit

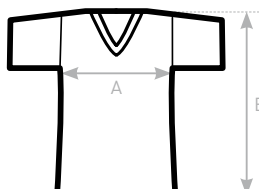
- Mainstream contemporary fit #allpurposes
- Tubular construction #movement
- Thin collar rib for modern appearance #uptodate
- Back necktape for a clean finish #comfort
- Same 41 colours for men & women #perfectduo
- 9 sizes - XS to 5XL #fitsall
- Satin label #ultrasofttouch

### #Quality/Handfeel

- Made of 100% cotton #protectmyskin
- #Oeko-Tex100
- Resistant fabric and soft handfeel #ring spun
- Unchanged proven B&C quality fabric #20years
- Middle weight fabric 150 gsm #whatevertheweather

### #Printability/Decoration

- Very smooth and even surface for bright and crisp printing results #details
- Tested and approved for all standard printing techniques applicable on cotton #beinspired
- Folded in box to ease the decoration process #makemylifeeasy



### SIZES [CM]

B&C #E150 TU 01T	XS	S	M	L	XL	2XL	3XL	4XL	5XL
A HALF CHEST	47	50	53	56	59	62	65	70	75
B BODY LENGTH FROM NECK POINT	68	70	72	74	76	78	80	82	84



Tested for harmful substances.  
www.oeko-tex.com/standard100