

# KARIBAN

**REFERENCE :** K261

**SIZES :** XS\_S\_M\_L\_XL\_XXL

**COMPOSITION :**

Main fabric : Combed Cotton single jersey - 180 100%cotton  
 Main fabric : Polyester / Cotton single jersey (20/1) 65/35 - 180  
 For heather colors 65%polyester / 35%cotton  
 Main fabric : Polyester / Cotton single jersey (20/1) 65/35 - 180  
 For contrasted collar, collar band and inner front placket 65%  
 polyester / 35%cotton

**WEIGHT :**

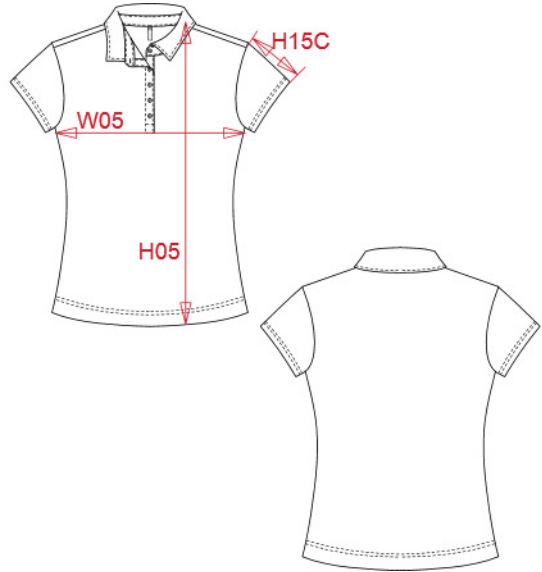
Main fabric : 180 gsm  
 Main fabric : 180 gsm  
 Main fabric : 180 gsm

**TECHNICAL DETAIL :**

Enzyme fabric wash

**ARTICLE WEIGHT :**

152 gr/pc



DESCRIPTION	
<b>Français :</b> Polo jersey bicolore femme	
<b>English :</b> Ladies' two-tone jersey polo shirt	
<b>Nederlands :</b> Tweekleurige damespolo jersey	
<b>Deutsch :</b> Zweifarbige Jersey-Polohemd für Damen	
<b>Español :</b> Polo jersey bicolor de mujer	
<b>Italiano :</b> Polo jersey bicolore donna	
<b>Português :</b> Polo de senhora jersey bicolor	

COLORS	PANTONE SERIGRAPHIE
Black / Dark grey heather	Black / Based on 446C
Dark grey heather / Black	Based on 446C / Black
Navy / Dark grey heather	433C / Based on 446C
White / Navy	White / 433C

MEASUREMENT							
Description	XS	S	M	L	XL	XXL	
<b>H05 (L)</b> Hauteur totale / Total height	59,25	61,25	63,25	65,25	67,25	69,25	
<b>W05 (L)</b> 1/2 largeur poitrine / 1/2 chest width	43	46	49	52	55	58	
<b>H15C (L)</b> Longueur manche courte / Short sleeve length	14	14,75	15,50	16,25	17	17,75	

CARE LABEL				

PACKING	
Box	50 pcs / box XS => L:60cm W:40cm H:25cm GW:8.20kg NW:7.20kg S => L:60cm W:40cm H:25cm GW:8.70kg NW:7.70kg M => L:60cm W:40cm H:25cm GW:9.20kg NW:8.20kg L => L:60cm W:40cm H:25cm GW:9.80kg NW:8.80kg XL => L:60cm W:40cm H:25cm GW:10.40kg NW:9.40kg XXL => L:60cm W:40cm H:25cm GW:11.10kg NW:10.10kg