

# KARIBAN

REFERENCE : K3014

SIZES : S\_M\_L\_XL\_XXL\_3XL

**COMPOSITION :**

Main fabric : Combed cotton / Elastane single jersey 97/3 silky touch - 160 For solid colors 97%cotton / 3%elastane

Main fabric : Carded cotton / Viscose / Elastane single jersey 87/9/4 silky touch - 160 For heather colors 87%cotton/9% viscose/4%elastane

**WEIGHT :**

Main fabric : 160 gsm

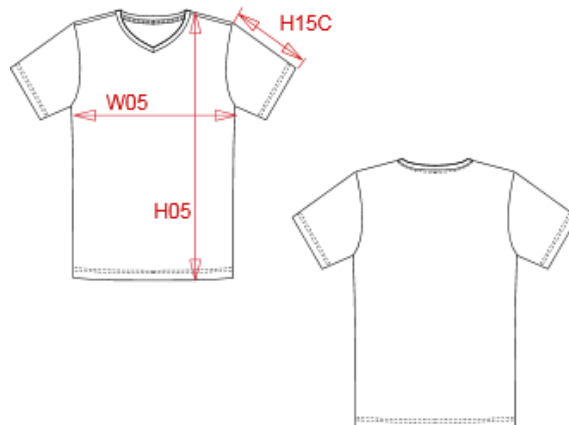
Main fabric : 160 gsm

**TECHNICAL DETAIL :**

Silky Touch

**ARTICLE WEIGHT :**

158 gr/pc



DESCRIPTION
<b>Français :</b> T-shirt manches courtes col V homme
<b>English :</b> Men's short-sleeved V-neck t-shirt
<b>Nederlands :</b> T-shirt korte mouwen V-hals
<b>Deutsch :</b> Kurzarm-T-Shirt mit V-Ausschnitt
<b>Español :</b> Camiseta con elastán cuello de pico hombre
<b>Italiano :</b> T-shirt maniche corte collo a V
<b>Português :</b> T-shirt decote V de manga curta

COLORS	PANTONE SERIGRAPHIE
Black	Black
White	White
Navy	433C
Light grey heather	Based on 877C

MEASUREMENT							
Description	S	M	L	XL	XXL	3XL	
<b>W05 (M)</b> 1/2 largeur poitrine à 1.5cm de l'emmanchure / 1/2 chest width at 1.5cm below armhole	48	51	54	57	60	63	
<b>H05 (M)</b> Hauteur totale / Total height	69	71	73	75	77	79	
<b>H15C (M)</b> Longueur manche courte / Short sleeve length	21,50	22,25	23	23,75	24,50	25,25	

CARE LABEL

PACKING	
Box	50 pcs / box S => L:60cm W:40cm H:19cm GW:6.60kg NW:5.00kg M => L:60cm W:40cm H:19cm GW:7.10kg NW:5.50kg L => L:60cm W:40cm H:19cm GW:7.50kg NW:5.90kg XL => L:60cm W:40cm H:22cm GW:8.00 kg NW:6.40kg XXL => L:60cm W:40cm H:22cm GW:8.60 kg NW:7.00kg 3XL => L:60cm W:40 cm H:22cm GW:9.20 kg NW:7.60kg