

# KARIBAN

**REFERENCE :** KV2206

**SIZES :** S\_M\_L\_XL\_XXL\_3XL

**COMPOSITION :**

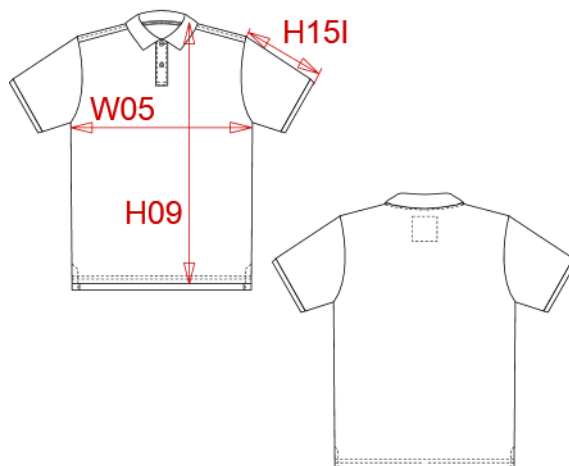
Main fabric : Combed cotton pique - 220 100%cotton  
 Main fabric : Combed cotton / viscose pique 98/2 - 220 98%  
 cotton / 2%viscose

**WEIGHT :**

Main fabric : 220 gsm  
 Main fabric : 220 gsm

**ARTICLE WEIGHT :**

260 gr/pc



DESCRIPTION
<b>Français :</b> Polo vintage manches courtes homme
<b>English :</b> Men's vintage short sleeve polo shirt
<b>Nederlands :</b> Vintage herenpolo met korte mouwen
<b>Deutsch :</b> Kurzarm-Polohemd für Herren im Vintage-Stil
<b>Español :</b> Polo vintage manga corta hombre
<b>Italiano :</b> Polo uomo vintage manica corta
<b>Português :</b> Polo vintage de homem de manga curta

COLORS	PANTONE SERIGRAPHIE
Vintage navy	533C
Vintage charcoal	447C
Vintage dark red	202C
Ash heather	Based on Warm gray 1C
Slub grey heather	Based on 7539C
Night blue heather	Based on 432C

MEASUREMENT						
Description	S	M	L	XL	XXL	3XL
<b>H09 (M)</b> Hauteur totale devant / Front total height	69	71	73	75	77	79
<b>W05 (M)</b> 1/2 largeur poitrine / 1/2 chest width	50	53	56	59	62	65
<b>H15I (M)</b> Longueur manche avec bord côte / Sleeve length with rib	20,50	21,25	22	22,75	23,50	24,25

CARE LABEL

PACKING	
Box	30 pcs / box S => L:60cm W:40cm H:18cm GW:8.1kg NW:6.9kg M => L:60cm W:40cm H:18cm GW:8.8kg NW:7.6kg L => L:60cm W:40cm H:18cm GW:9.4kg NW:8.2kg XL => L:60cm W:40cm H:18cm GW:10kg NW:8.8kg XXL => L:60cm W:40cm H:20cm GW:10.3kg NW:9.3kg 3XL => L:60cm W:40cm H:20cm GW:10.9kg NW:9.9kg