



The unisex dry handfeel jogger

Relaxed Fit

XXS 3XL

400 GSM

Details

- Self fabric elasticated waistband and leg cuff opening
- Flat drawcords in matching body colour with end folded for clean finish
- Drawcord placement at inside waistband
- Embroidered eyelets
- Front welt pockets
- Patch pocket at back
- Side seam and leg cuff with double needle topstitch

Composition

Shell - French Terry  
 100% Cotton - Organic Carded - 400 GSM  
 Dry Handfeel

Care

Wash similar colours together, no ironing on print, wash and iron inside out.



Country of origin

Weaving : Bangladesh  
 Dyeing : Bangladesh  
 Assembly : Bangladesh



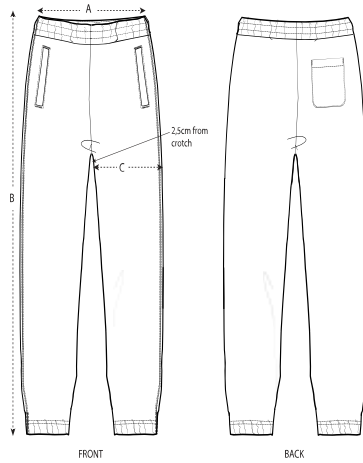
Colors



Essential Heathers



Size Guide



Sizes	XXS	XS	S	M	L	XL	XXL	3XL
A Waist	35	37	39	41	44	47	50	53
B Leg Length	97	99	101	103	105	107	109	109
C Thigh	29.5	30.5	31.5	32.5	34	35.5	37	38.5

Packing

Sizes	XXS	XS	S	M	L	XL	XXL	3XL
Pieces/bag	5	5	5	5	5	5	5	5
Pieces/box	10	20	20	20	20	20	20	10