



The women's hoodie dress

Medium Fit                      XS XXL                      300 GSM

Details

- Set-in sleeve
- Double layered hood in self fabric
- Round drawcords in matching body colour with metal tipping
- Metal eyelets
- Inside herringbone back neck tape
- Self fabric half moon at back neck
- Single needle topstitch at neckline and along hood opening
- 1x1 rib at sleeve hem
- Armhole, sleeve hem and bottom hem with twin needle topstitch
- Kangaroo pocket at front
- Slits at side seam

Composition

Shell - Brushed  
 85% Cotton - Organic Ring Spun Combed , 15% Polyester - Recycled - 300 GSM  
 Fabric washed , Light sueded

Care

Wash similar colours together, do not iron on print,  
 wash and iron inside out.



Country of origin

Weaving : Bangladesh  
 Dyeing : Bangladesh  
 Assembly : Bangladesh



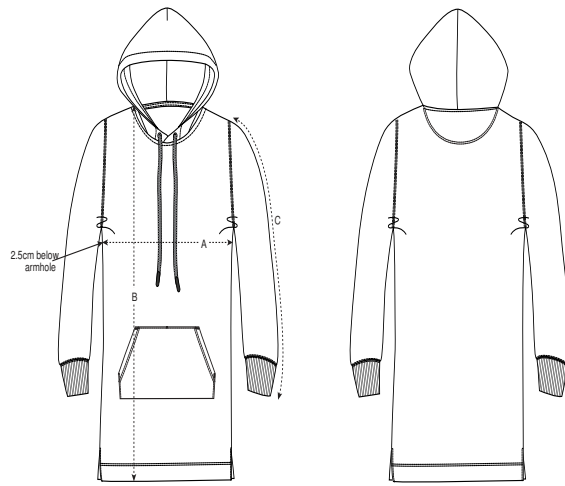
Colors



Essential Heathers



Size Guide



Sizes		XS	S	M	L	XL	XXL
A	Half Chest	49	51.5	54.5	57.5	60.5	63.5
B	Body Length	83.5	85.5	87.5	89.5	90.5	91.5
C	Sleeve Length	59.5	60.5	61.5	62	62.5	62.5

Packing

Sizes		XS	S	M	L	XL	XXL
	Pieces/bag	5	5	5	5	5	5
	Pieces/box	20	20	20	20	20	20