



The babies' body short sleeves

Fitted 0-3 m/56-62cm 18-24 m/86-92cm 210 GSM

Details

- Set-in sleeve
- 1x1 rib binding at neck collar and leg opening
- Snap placket at shoulder
- Snap closure at bottom

Composition

Shell - Interlock
 100% Cotton - Organic Ring Spun Combed - 210 GSM
 Panel washed

Care

Wash similar colours together, no ironing on print,
 wash and iron inside out.



Country of origin

Weaving : Bangladesh
 Dyeing : Bangladesh
 Assembly : Bangladesh



Whites



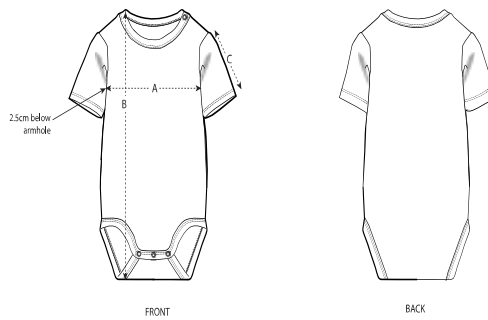
Colors



Special Heathers



Size Guide



Sizes	0-3 m/56-62cm	3-6 m/62-68cm	6-9 m/68-74cm	9-12 m/74-80cm	12-18 m/80-86cm	18-24 m/86-92cm
A Half Chest	19	20	21	22	23	24.5
B Body Length	35	38	41	43	45	48
C Sleeve Length	6	6.5	7	7.5	8	8.5

Packing

Sizes	0-3 m/56-62cm	3-6 m/62-68cm	6-9 m/68-74cm	9-12 m/74-80cm	12-18 m/80-86cm	18-24 m/86-92cm
Pieces/bag	5	5	5	5	5	5
Pieces/box	100	100	100	100	100	100